

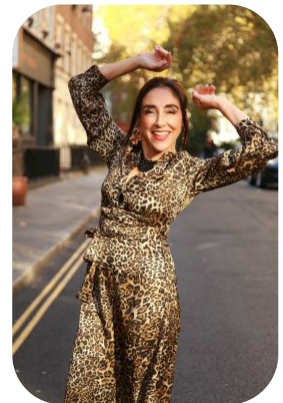
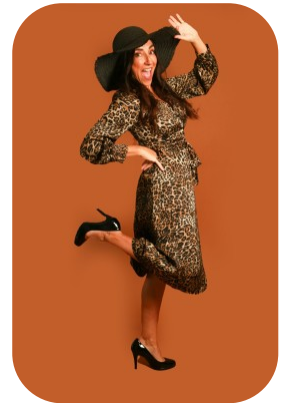
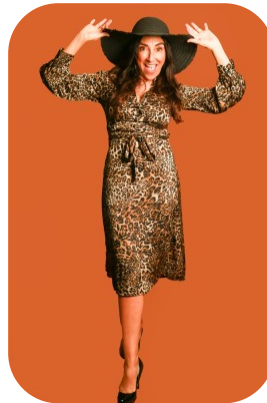


# Patricia Green



Age: 61-70	Height: 5ft3inch	Eye Colour: Hazel	Accent: London
Gender:F	Weight: 52kg	Waist: 27	Bust: 34
Location: London	Shoe Size: 5		
Drives: No	Hair Color: Brunette		

Talents  
MATURE MODELS, EXTRAS



Additional Talents:

SWIM - DANCE FITNESS - ZUMBA - HIIT CLASSES - WEIGHT TRAINING - COMBAT FITNESS CLASSES - LANGUAGES (Spanish - fluent, Italian & French - basic)

FOR ANY INQUIRIES PLEASE CONTACT US

0207 834 66 60 - Office

[www.fusionmng.com](http://www.fusionmng.com)

[cast@fusionmng.com](mailto:cast@fusionmng.com)

**FM** FUSION  
MANAGEMENT  
TALENT & MODEL MANAGEMENT AGENCY