

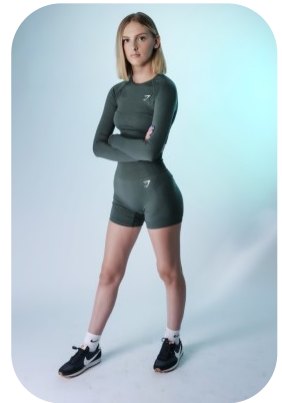


# Poppy S



Age: 16-20	Height: 5ft8inch	Eye Colour: Hazel	Accent: London
Gender:F	Weight: 51kg	Waist: 28	Bust: 31
Location: London	Shoe Size: 6	Hips: 34	
Drives: No	Hair Color: Blonde		

Talents  
TEEN MODELS, EXTRAS



Additional Talents:  
SWIM - BIKE

FOR ANY INQUIRIES PLEASE CONTACT US

0207 834 66 60 - Office

[www.fusionmng.com](http://www.fusionmng.com)

[cast@fusionmng.com](mailto:cast@fusionmng.com)

