

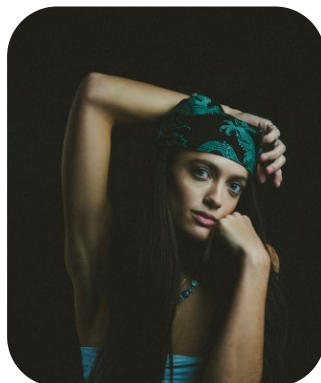
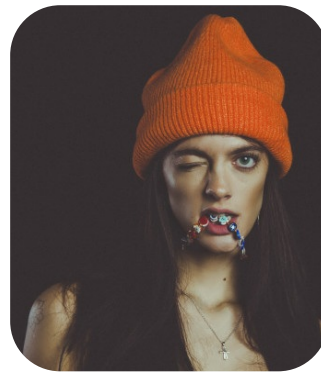


# Poppy Safford



Age: 21-24	Height: 5ft7inch	Eye Colour: Green	Accent: London
Gender:F	Weight: 49kg	Waist: 24	Bust: 28
Location: London	Shoe Size: 5	Hips: 30	
Drives: Yes	Hair Color: Brunette		

Talents  
 COMMERCIAL MODELS, FITNESS MODELS, HIGH FASHION, ATHLETES, SPECIALITY



Additional Talents:  
 SWIM PRO

BIKE - HORSERIDE PRO

GYM FITNESS

---

FOR ANY INQUIRIES PLEASE CONTACT US

0207 834 66 60 - Office

[www.fusionmng.com](http://www.fusionmng.com)

[cast@fusionmng.com](mailto:cast@fusionmng.com)

**FM** FUSION  
MANAGEMENT  
TALENT & MODEL MANAGEMENT AGENCY