



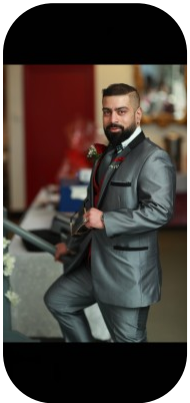
Rahat A



Age: 31-40	Height: 5ft5inch	Eye Colour: Brown	Accent: Northern
Gender: M	Weight: 80kg	Waist: 34	Bust: 42
Location: Britain North	Shoe Size: 8.UK	Hips: 38	
Drives: Yes	Hair Color: Black		

Talents

COMMERCIAL MODELS, MATURE MODELS, EXTRAS



Additional Talents:

BIKE MARTIAL ARTS FOOTBALL BADMINTON PING PONG JUDO JUJITSU

FOR ANY INQUIRIES PLEASE CONTACT US

0207 834 66 60 - Office

www.fusionmng.com

cast@fusionmng.com

FM FUSION
MANAGEMENT
TALENT & MODEL MANAGEMENT AGENCY