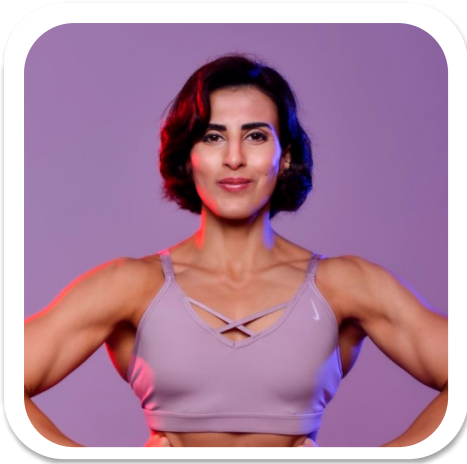


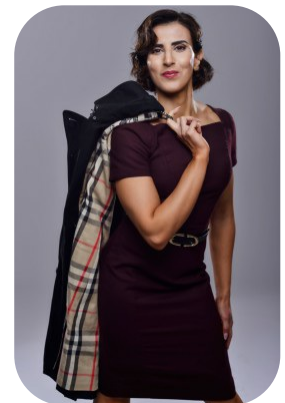
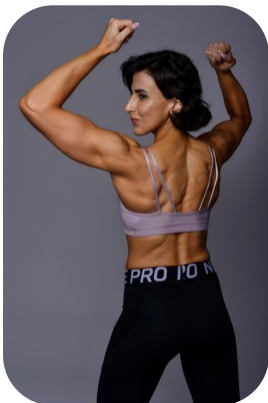
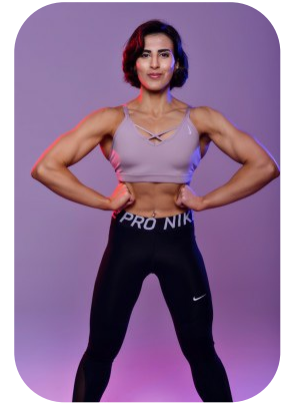
# Rasha B



Age: 31-40	Height: 5ft5inch	Eye Colour: Brown	Accent: Mid East
Gender:F	Weight: 52kg	Waist: 24	Bust: 31
Location: Britain	Hair Color: Brunette	Hips: 32	
Drives: No			

### Talents

COMMERCIAL MODELS, FITNESS MODELS, EXTRAS, ATHLETES



### Additional Talents:

BIKE VIOLIN FITNESS WEIGHT LIFTING GYM FENCING MARTIAL ARTS TAE KWON DO BOXING  
RUNNING

FOR ANY INQUIRIES PLEASE CONTACT US

0207 834 66 60 - Office

[www.fusionmng.com](http://www.fusionmng.com)

[cast@fusionmng.com](mailto:cast@fusionmng.com)

**FM** FUSION  
MANAGEMENT  
TALENT & MODEL MANAGEMENT AGENCY