

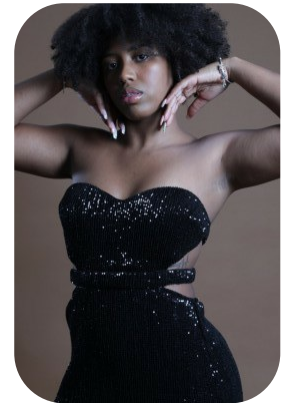


# Rosiana Spinola



Age: 25-30	Height: 5ft9inch	Eye Colour: Black	Accent: London
Gender:F	Weight: 74kg	Waist: 26	Bust: 35
Location: Wales	Shoe Size: 7.5	Hair Color: Black	
Drives: Yes			

Talents  
COMMERCIAL MODELS, EXTRAS, ATHLETES



Additional Talents:  
SWIM - CLIMB  
FOOTBALL

FOR ANY INQUIRIES PLEASE CONTACT US

0207 834 66 60 - Office

[www.fusionmng.com](http://www.fusionmng.com)

[cast@fusionmng.com](mailto:cast@fusionmng.com)

