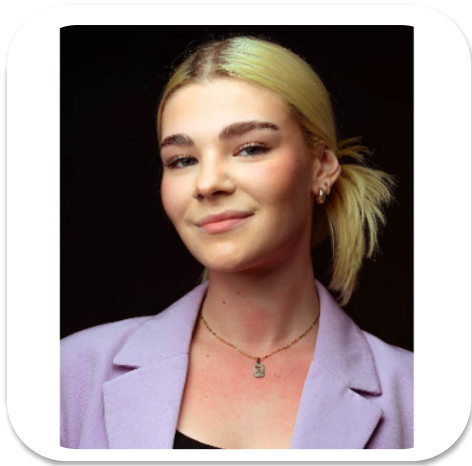


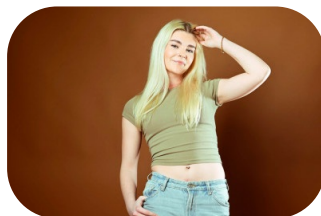
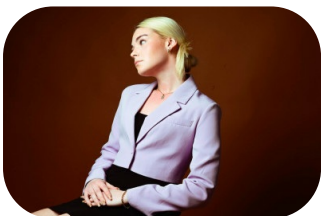


# Roxanne Hallett



Age: 16-20	Height: 5ft8inch	Eye Colour: Green	Accent: Other
Gender:F	Weight: 63kg	Waist: 27es	Bust: 32es
Location: London	Shoe Size: 6	Hips: 36es	
Drives: No	Hair Color: Blonde		

Talents  
COMMERCIAL MODELS



Additional Talents:  
SWIM BIKE GYM SING  
NETBALL RUN

FOR ANY INQUIRIES PLEASE CONTACT US

0207 834 66 60 - Office

[www.fusionmng.com](http://www.fusionmng.com)

[cast@fusionmng.com](mailto:cast@fusionmng.com)

**FM** FUSION  
MANAGEMENT  
TALENT & MODEL MANAGEMENT AGENCY