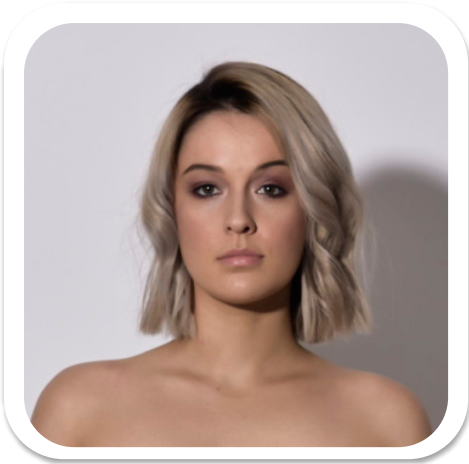


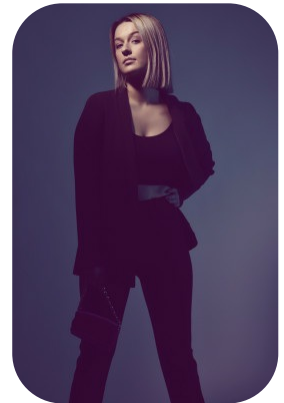
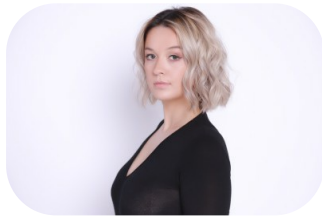


Ruby Eaves



Age: 21-24	Height: 5ft6inch	Eye Colour: Hazel	Accent: London
Gender:F	Weight: 65kg	Waist: 29	Bust: 37
Location: London	Shoe Size: 6	Hips: 35	
Drives: Yes	Hair Color: Blonde		

Talents
COMMERCIAL MODELS, EXTRAS



Additional Talents:
- BIKE - SWIM- GYM

FOR ANY INQUIRIES PLEASE CONTACT US

0207 834 66 60 - Office

www.fusionmng.com

cast@fusionmng.com

