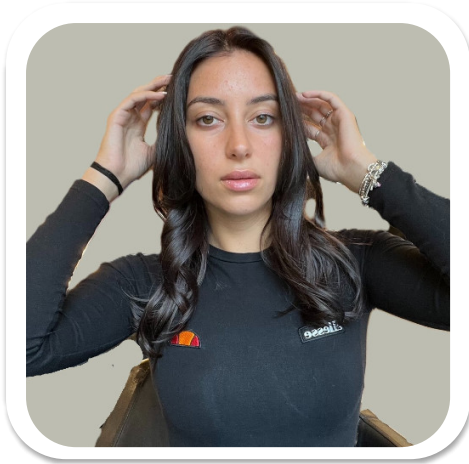


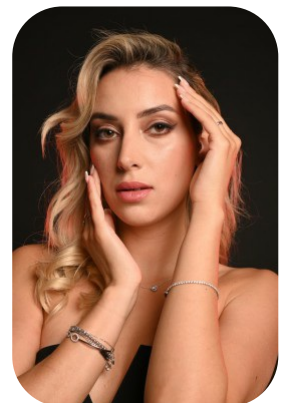
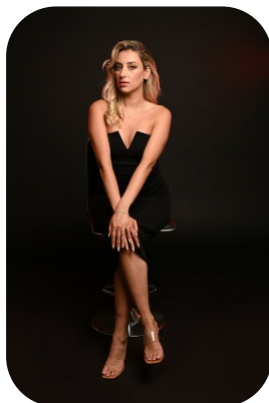
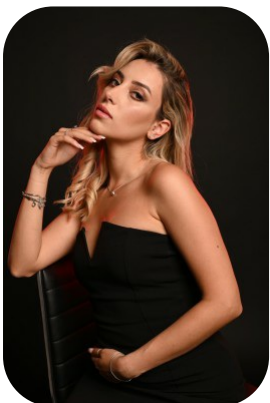
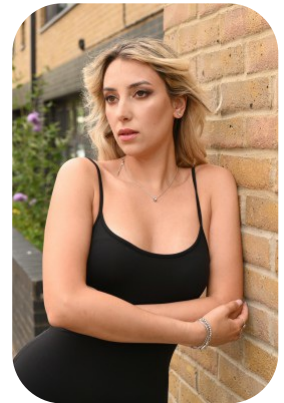


Sabrina Foglia



Age: 25-30	Height: 5ft6inch	Eye Colour: Hazel	Accent: Italian
Gender:F	Weight: 54kg	Waist: 26	
Location: London	Shoe Size: 5.5	Bust: 34	
Drives: Yes	Hair Color: Brunette	Hips: 38	

Talents
COMMERCIAL MODELS, EXTRAS



Additional Talents:
SWIM BIKE
GYM FITNESS

FOR ANY INQUIRIES PLEASE CONTACT US

0207 834 66 60 - Office

www.fusionmng.com

cast@fusionmng.com

FM FUSION
MANAGEMENT
TALENT & MODEL MANAGEMENT AGENCY