

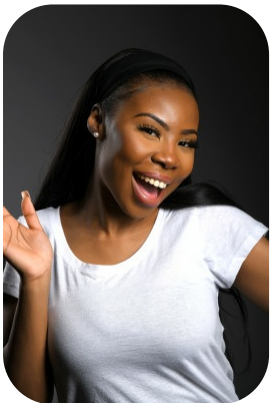
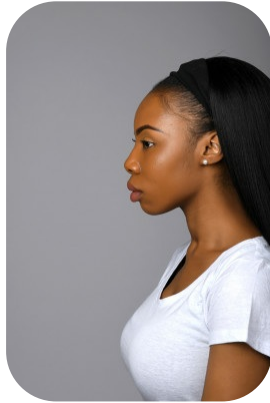
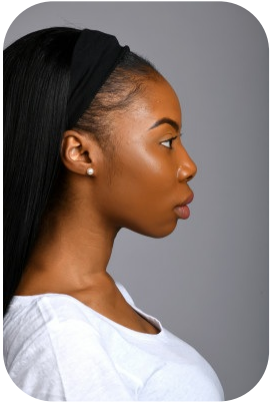
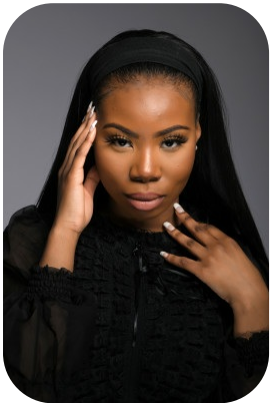


# Sarah Dwama



Age: 25-30	Height: 5ft5inch	Eye Colour: Brown	Accent: London
Gender:F	Weight: 53kg	Waist: 27	
Location: London	Shoe Size: 5.5	Bust: 33	
Drives: No	Hair Color: Black	Hips: 35	

Talents  
COMMERCIAL MODELS, EXTRAS



Additional Talents:  
BIKE - ATHLETICS - GYM FITNESS

FOR ANY INQUIRIES PLEASE CONTACT US

0207 834 66 60 - Office

[www.fusionmng.com](http://www.fusionmng.com)

[cast@fusionmng.com](mailto:cast@fusionmng.com)

