

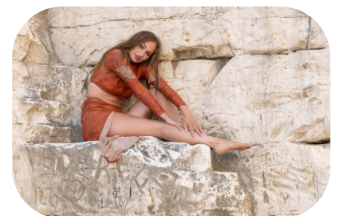
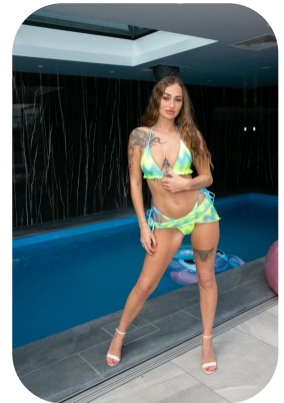
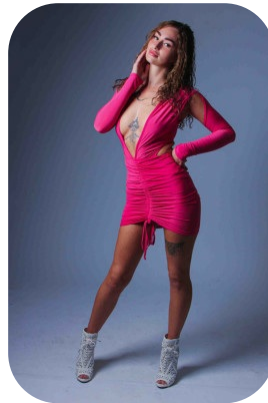
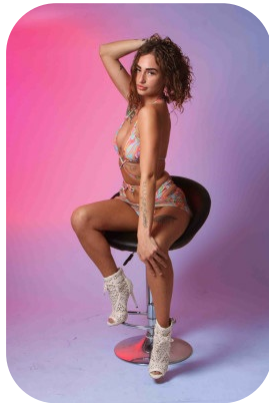


# Sarah Golding



Age: 21-24	Height: 5ft4inch	Eye Colour: Brown	Accent: London
Gender:F	Weight: 52kg	Waist: 29ch	
Location: London	Shoe Size: 5	Bust: 34	
Drives: No	Hair Color: Brunette	Hips: 32ch	

Talents  
COMMERCIAL MODELS, EXTRAS



Additional Talents:  
BIKE - SWIM - HORSERIDE  
GYM FITNESS

FOR ANY INQUIRIES PLEASE CONTACT US

0207 834 66 60 - Office

[www.fusionmng.com](http://www.fusionmng.com)

[cast@fusionmng.com](mailto:cast@fusionmng.com)

**FM** FUSION  
MANAGEMENT  
TALENT & MODEL MANAGEMENT AGENCY