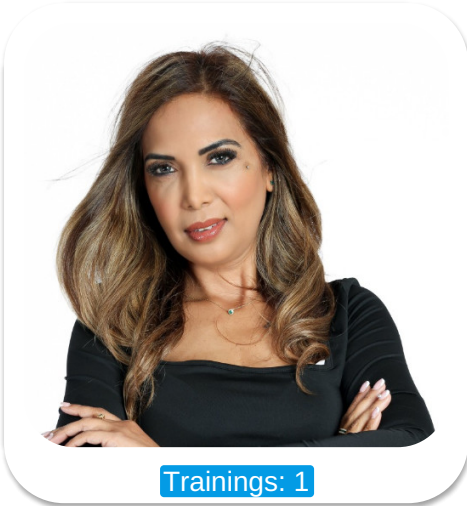




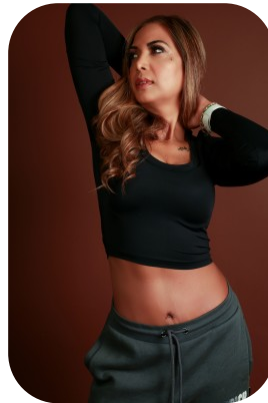
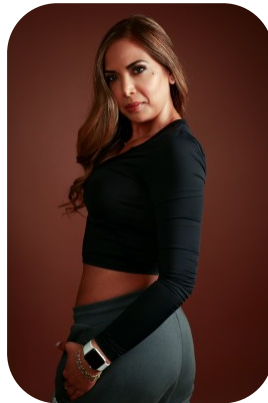
# Shaz



Trainings: 1

Age: 41-50	Height: 5ft3inch	Eye Colour: Gray	Accent: London
Gender:F	Weight: 53kg	Waist: 74cm	
Location: London	Shoe Size: 6	Bust: 85cm	
Drives: Yes	Hair Color: Other/Extreme	Hips: 90cm	

Talents  
MATURE MODELS, EXTRAS



Additional Talents:  
SWIM - HORSE RIDE - CLIMB  
BADMINTON - ATHLETICS

Trainings:

Gym

Edmonton Leisure Centre

---

FOR ANY INQUIRIES PLEASE CONTACT US

0207 834 66 60 - Office

[www.fusionmng.com](http://www.fusionmng.com)

[cast@fusionmng.com](mailto:cast@fusionmng.com)

**FM** FUSION  
MANAGEMENT  
TALENT & MODEL MANAGEMENT AGENCY