

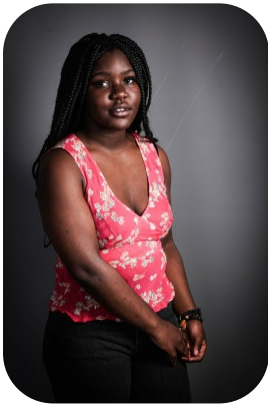
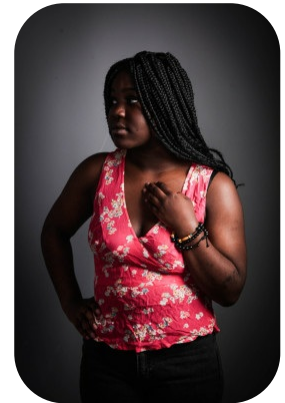
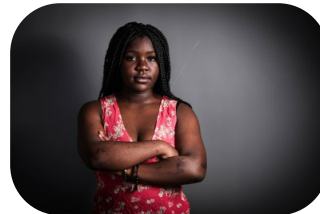
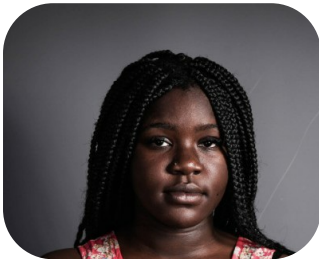


Shiloh Ngindon



Age: 16-20	Height: 5ft4inch	Eye Colour: Black	Accent: London
Gender:F	Weight: 70kg	Waist: NA	Bust: NA
Location: London	Shoe Size: 7	Hips: NA	
Drives: No	Hair Color: Black		

Talents
TEEN MODELS, EXTRAS



Additional Talents:
BIKE - TENNIS

FOR ANY INQUIRIES PLEASE CONTACT US

0207 834 66 60 - Office

www.fusionmng.com
cast@fusionmng.com

