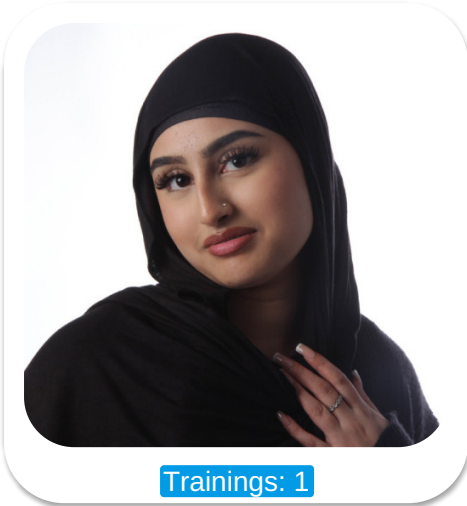




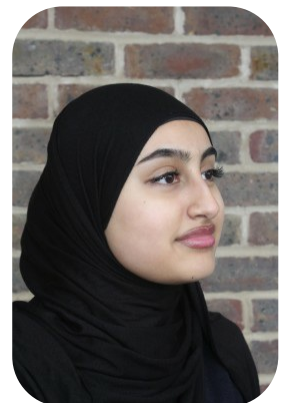
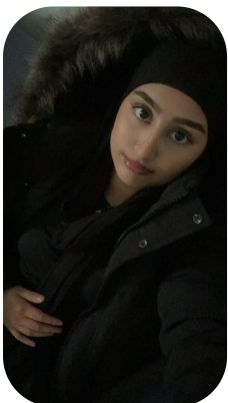
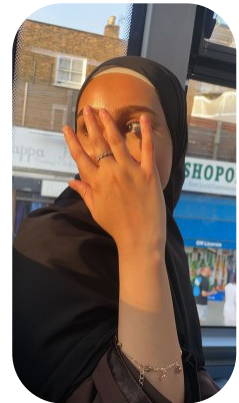
Shinaz B



Trainings: 1

Age: 11-15	Height: 5ft2inch	Eye Colour: Brown	Accent: London
Gender:F	Weight: 44kg	Waist: 78cm	
Location: London	Shoe Size: 4	Bust: 18ch	
Drives: No	Hair Color: Brunette	Hips: 80cm	

Talents
TEEN MODELS, EXTRAS



Additional Talents:
BASKETBALL

Trainings:

Training type

FOR ANY INQUIRIES PLEASE CONTACT US

0207 834 66 60 - Office

www.fusionmng.com

cast@fusionmng.com

FM FUSION
MANAGEMENT
TALENT & MODEL MANAGEMENT AGENCY