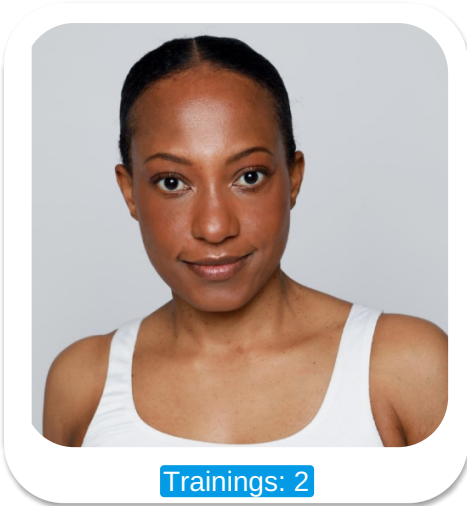




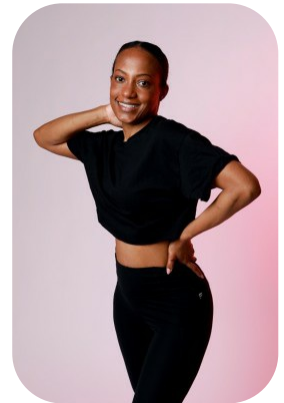
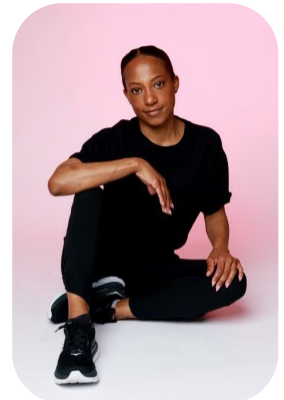
Shona Prest



Trainings: 2

Age: 31-40	Height: 5ft2inch	Eye Colour: Brown	Accent: London
Gender:F	Weight: 50kg	Waist: 25	
Location: London	Shoe Size: 4	Bust: 32B	
Drives: Yes	Hair Color: Brunette	Hips: 34	

Talents
COMMERCIAL MODELS, NEW FACES, EXTRAS



Additional Talents:
SWIM GYM FITNESS BIKE
RADIO WORK - PRESENTING - ACTING

Trainings:

ACTING

NEW YORK FILM ACADEMY IN LA

ACTING CERTIFICATE

CITY ACTING DRAMA SCHOOL LONDON

FOR ANY INQUIRIES PLEASE CONTACT US

0207 834 66 60 - Office

www.fusionmng.com

cast@fusionmng.com

FM FUSION
MANAGEMENT
TALENT & MODEL MANAGEMENT AGENCY