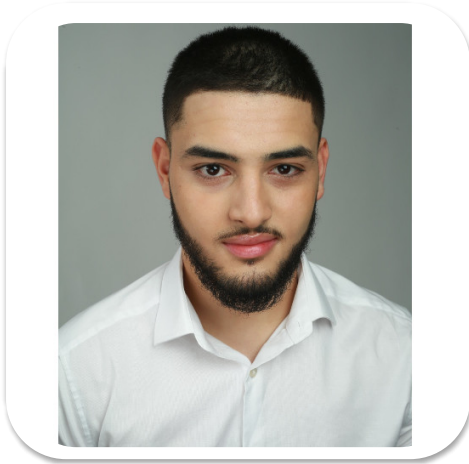




Wassim Gasmi



Age: 21-24	Height: 6ft1inch	Eye Colour: Black	Accent: London
Gender: M	Weight: 83kg	Bust: 43es	
Location: London	Shoe Size: 11		
Drives: No	Hair Color: Black		

Talents
COMMERCIAL MODELS, EXTRAS



Additional Talents:

BIKE - SWIM - HORSERIDE - ICESKATE - CLIMB

RUGBY, FOOTBALL, BASKETBALL, CRICKET, BADMINTON, HOCKEY, DIVING, HANDBALL

GYM FITNESS

KARATE

FOR ANY INQUIRIES PLEASE CONTACT US

0207 834 66 60 - Office

www.fusionmng.com

cast@fusionmng.com

FM FUSION
MANAGEMENT
TALENT & MODEL MANAGEMENT AGENCY