

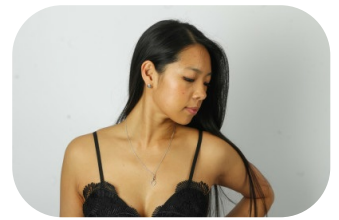


# Wendy Lau



Age: 31-40	Height: 5ft5inch	Eye Colour: Brown	Accent: London
Gender: F	Weight: 56kg	Waist: 27	Bust: 34
Location: London	Shoe Size: 5	Hips: 38	
Drives: Yes	Hair Color: Black		

**Talents**  
 COMMERCIAL MODELS, COMMERCIAL DANCERS,  
 EXTRAS, ATHLETES



Additional Talents:

BIKE - SWIM - ROLLERBLADE - ROLLERSKATE - HORSERIDE - ICESKATE - SKI - CLIMB

NETBALL (COMPETITIVE) , TENNIS, GOLF (RECREATIONAL) - 15 YEARS

GYM FITNESS

DANCE - SALSA, BACHATA -5 YEARS

---

FOR ANY INQUIRIES PLEASE CONTACT US

0207 834 66 60 - Office

[www.fusionmng.com](http://www.fusionmng.com)

[cast@fusionmng.com](mailto:cast@fusionmng.com)

**FM** FUSION  
MANAGEMENT  
TALENT & MODEL MANAGEMENT AGENCY