

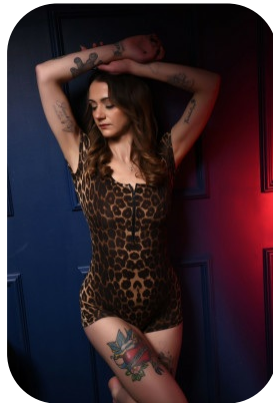
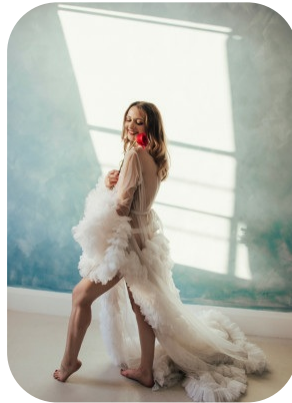


Yasmin Francis



Age: 31-40	Height: 5ft8inch	Eye Colour: Blue	Accent: London
Gender:F	Weight: 60kg	Waist: 27	Bust: 33.5
Location: London	Shoe Size: 6	Hips: 34	
Drives: Yes	Hair Color: Brunette		

Talents
COMMERCIAL MODELS, COMMERCIAL DANCERS,
EXTRAS



Additional Talents:

BIKE - SWIM - ROLLERSKATE - ICESKATE - CLIMB - SURFING

TENNIS, BADMINTON, NETBALL

YOGA

GYM FITNESS

DANCE - BALLET, TAP, IRISH, RIVER, COMMERCIAL

SING

FOR ANY INQUIRIES PLEASE CONTACT US

0207 834 66 60 - Office

www.fusionmng.com

cast@fusionmng.com

FM FUSION
MANAGEMENT
TALENT & MODEL MANAGEMENT AGENCY