

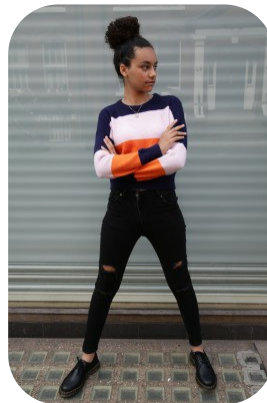
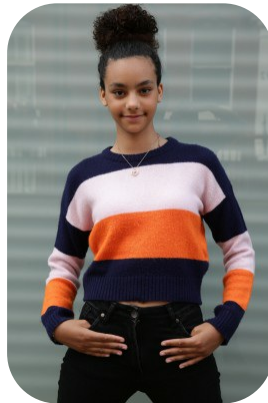
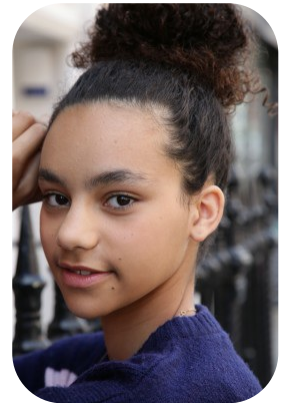


# Yasmin Gomes



Age: 11-15	Height: 5ft9inch	Eye Colour: Brown	Accent: London
Gender:F	Weight: 55kg	Waist: 28.5	Bust: D
Location: London	Shoe Size: 8.5	Hips: 36.5	
Drives: No	Hair Color: Brunette		

Talents  
CHILD MODELLING, TEEN MODELS



Additional Talents:  
SWIM - BIKE - TAE KWON DO

FOR ANY INQUIRIES PLEASE CONTACT US

0207 834 66 60 - Office

[www.fusionmng.com](http://www.fusionmng.com)

[cast@fusionmng.com](mailto:cast@fusionmng.com)

