



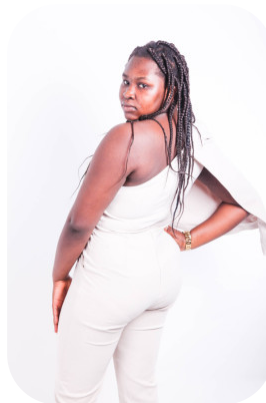
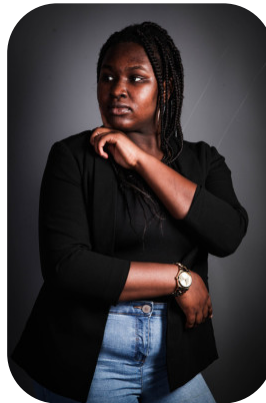
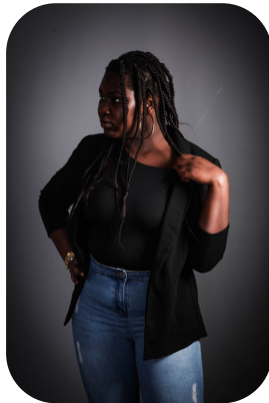
Yassin Touray



Age: 16-20	Height: 5ft5inch	Eye Colour: Black	Accent: London
Gender:F	Weight: 80kg	Waist: 98 cm	
Location: London	Shoe Size: 6	Bust: 102 cm	
Drives: No	Hair Color: Black	Hips: 110 cm	

Talents

COMMERCIAL MODELS, TEEN MODELS, EXTRAS



Additional Talents:

BIKE - SWIM - HORSERIDE - ICESKATE CLIMB

PIANO - 5 YEARS

FOR ANY INQUIRIES PLEASE CONTACT US

0207 834 66 60 - Office

www.fusionmng.com

cast@fusionmng.com

